



Pureweld ESM

Electronic Systems Management

For welding fume protection including Hexavalent Chromium and Manganese.

For maximum mobility and protection from particulate hazards. Head mounted, completely self-contained PAPR with no trailing leads or hoses. Built-in electronic systems management (ESM) light bar and audible alarm alert the user to low battery, filter change or low flow. Flow rate 7.6 or 8.2 CFM. Wide vision ANSI compliant primary lens. APF 1000 with Neck Cape, or APF 25 with Loose Fitting Face Seal.

KEY FEATURES:

- Draws air from surrounding environment through filter located at rear of the helmet
- Sophisticated ESM continually monitors all functions and provides a self-diagnostic systems check
- LED and audible signals alert the wearer of low flow, low battery or filter change
- Delivers air at 7.6 CFM into breathing zone. Manually active Booster Switch increases airflow to 8.2 CFM or 230 Liters/Min to meet demands of hotter and more extreme working conditions. Unique air circulator system creates a smooth, continuous flow pattern, delivering optimum air supply to wearer with minimum resistance
- Filters: HEPA (HE); Hydrogen Fluoride and Hydrogen Chloride (HE/HF/HC). Both remove 99.97% of liquid or solid based contaminants. Also effective for fume protection, including Hexavalent Chromium and Manganese, making it ideal for use in welding applications
- Adjustable Neck Cape, when sealed, creates self-contained positive pressure environment, providing additional protection to the lower face and neck area
- APF of 1000 with Neck Cape or APF of 25 with Loose Fitting Face Seal
- Wide vision face-shield manufactured from high impact-resistant polycarbonate with anti-mist, anti-scratch coating. Seals securely against helmet's frame and provides protection against impact, high impact (ANSI Z87+) and splashes
- Quick Release Headband allows for easy cleaning and enables the helmet to be quickly and easily adjusted for different head sizes and shapes, achieving optimum comfort, balance and fit



■ Available with standard 4x5 shade10 green lens, Jackson Safety® NexGen®, and Insight® Auto Darkening Filter featuring:

- Large viewing window offers 9 square inches of viewing area
- User adjustable shades 5, 9-13
- Multi-function capability (grind, weld, cut)
- Fast switching speed
- IR/UV protection at all times, protects to shade 14- even in the "off" state
- Two year warranty & made in the U.S.A.
- Four sensors, battery & solar powered




SPECIFICATIONS

APPROVALS	Pureweld
System Classification	Powered Air-Purifying Respirator (PAPR)
Head Protections	ANSI/ISEA Z89.1-2003, Type 1 Class G
Colors	Black, Hi Viz Green, Yellow and White
Face-Shield/Eye Protection	ANSI/ISEA Z87.1-2010 Hi Impact
Respiratory	NIOSH 42CFR84
Filter Type	HEPA (HE) or HEPA/HF/HC *Nuisance OV
Noise Level	Under 70dB
Assigned Protection Factor (APF)	APF 1000 Neck Cape or APF 25 Loose Fitting Face Seal
FM nonincendive US and Canada	Class I, II, III, Div 2, Groups ABCDEFG
Head Size Range	6 3/8" - 7 7/8" or 54-61 cm
Charger Specifications	110V/240V AC /50 or 60 Hz /200 mA
Battery Type	5 Cell Nickel Metal Hydride 6V 1.8 Ah per pack
Battery Duration	Up to 7 Hours with Two Batteries
Recharge Time	2.5 Hours from Full Discharge

Pureweld ESM

Configurations

The PureFlo ESM is configurable for use in a wide variety of applications. First choose your helmet platform, then the options and accessories for your particular needs.

 <p>PureFlo Pureweld ESM PAPR Developed for welding-fume protection.</p>	<p>(Choose One Option)</p> <p>APF 25 Loose Fitting Face Seal</p> <p>(Choose Your Filter)</p>  <p>Particulate HEPA Filter HE</p>	<p>APF 1000 Neck Cape</p>  <p>Nuisance Odor/ Filter Cartridge/ HE/HF/HC</p>
--	---	--

Features & Accessories



Talk



Grind

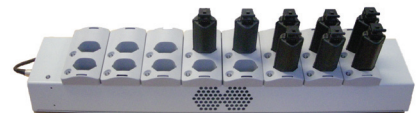


Weld

Electronic Systems Management

ESM continuously monitors PAPR flow rate, battery and filter life.

- LED/Audio Pre-Use-Check — Audible and all flash until flow rate is established
- LED/Filter OK — 3 Green on, new filter
- LED/Filter OK — 2 Green on, indicates filter usage
- LED/Filter OK — 1 Green on, indicates short filter life
- LED/Filter alert — 1 Red on, exit work area and replace filter
- Airflow Boost Mode — 3rd Green LED flashing
- Low Battery Alert — All LED's flashing, audible alert



16 battery multi-charger allows up to 16 ESM batteries to be charged at one time. Perfect for the users with multiple PureFlo PAPRs. Batteries can be added at random times and the internal PCB of the multicharger will charge each battery and indicate when the charging is complete in a nominal 2.5 hours.

GENTEX®
CORPORATION

Contact Us

Gentex is committed to designing innovative industrial safety solutions that protect people from immediate and long-term health and safety hazards present in their work environments, while enhancing workplace performance. Contact us today for more information on PureFlo and our full line of industrial safety solutions.